



Island Spas™



ARTESIAN SPAS™
WELLNESS FOR EVERY BODY





YOUR IDEAL
ISLAND RETREAT
IS YOURS TO CREATE



It's time to get
away.



Island Spas ELITE™

Powered by DirectFlow Technology

Our top-of-the-line **Island Elite** models provide you with the *ultimate* individual control and *best* hydrotherapy experience possible. The upgrade to the Island Spa shares Platinum Elite's patented Variable Control System. The most highly customizable spas in the industry. Create your own paradise.



CAPTAIN SEAT PERSONAL CONTROL

Control your *personal massage* pressure with individual seat pumps.

Antigua ELITE

84 in. x 84 in. x 36 in.

213 cm x 213 cm x 91 cm

Seating Capacity 6

55 Jets | Acrylic: White Pearl



Island Spas ELITE™

Powered by DirectFlow Technology



CAPTAIN SEAT PERSONAL CONTROL

Control your *personal massage* pressure with individual seat pumps.

Captiva ELITE

84 in. x 84 in. x 36 in.

213 cm x 213 cm x 91 cm

Seating Capacity 7

55 Jets | Acrylic: White Pearl



Island Spas ELITE™

Powered by DirectFlow Technology



CAPTAIN SEAT PERSONAL CONTROL

Control your *personal massage* pressure with individual seat pumps.

*“I feel at peace in my
Island Spa.”*

Owner from Toronto, Ontario

Grand Bahama ELITE

91 in. x 91 in. x 36 in.

231 cm x 231 cm x 91 cm

Seating Capacity 6

65 Jets | Acrylic: White Pearl

Island Spas ELITE™

Powered by DirectFlow Technology



CAPTAIN SEAT PERSONAL CONTROL

Control your *personal massage* pressure with individual seat pumps.

- custom massage seats
- more efficient
- reduces operation cost

Grand Cayman ELITE

91 in. x 91 in. x 36 in.

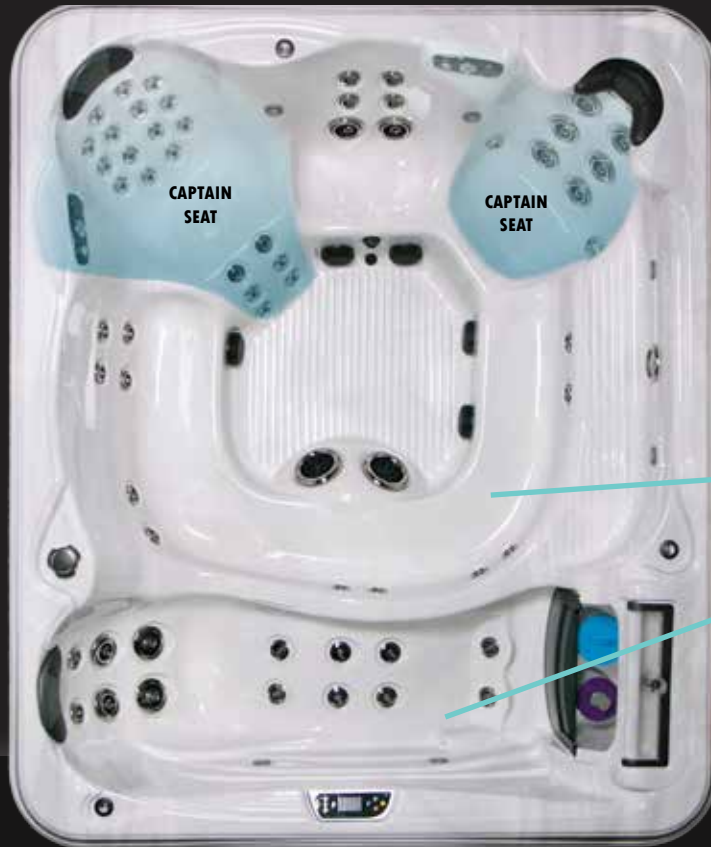
231 cm x 231 cm x 91 cm

Seating Capacity 7

65 Jets | Acrylic: White Pearl

Island Spas ELITE™

Powered by DirectFlow Technology



CAPTAIN SEAT PERSONAL CONTROL

Control your *personal massage* pressure with individual seat pumps.

A circular bench offers you additional seating.

Rejuvenate your tired hands and boost circulation with the hand massage tracks.

Isla Margarita ELITE

108 in. x 91 in. x 36 in.

274 cm x 231 cm x 91 cm

Seating Capacity 9

67 Jets | Acrylic: Silver Marble



Revitalize Refresh Restore

SKIN REJUVENATION WITH

MICROSILK®

THE BEAUTY OF MICROSILK® blankets your entire body with billions of oxygen-rich micro bubbles, while giving your skin a luxuriously silky feeling.



MICROBUBBLES

Unlike traditional air bubbles, MicroSilk® microbubbles are small enough to enter pores and remove impurities. Soaking in a MicroSilk® spa is like giving your entire body a facial, **making your skin feel luxuriously, silky and younger looking.**

OXYGEN LEVELS

With more oxygen than regular tap water, MicroSilk® increases the skin's metabolism while promoting skin cell growth. The oxygen-rich microbubbles **improve collagen production**, energize cells, stimulate your immune system, kill bacteria and promote healing.

NEGATIVE IONS

MicroSilk's microbubbles are loaded with negatively charged ions. Negative ions are known to improve serotonin levels and **relax the mind & body.**

- **MicroSilk (Available only on Barbados 63, Grand Bahama 52, 45, 33, Antigua 45, 33, Captiva 46, 33, Nevis 45, 33 & Santa Cruz 33)**

www.ArtesianSpas.com

WATER FEATURES & LED LIGHTING OPTIONS



Multicolor 10 LED



Tranquility Fall



Pillowfall



Cabinet Light



3) **DynaStar LED:**
(1) 5 in. (4) 2 in. LED Lights

4) **Multicolor 10 LED**

1) **DynaBrite LED:**
(1) 5 in. (6) 2 in. LED Lights, (2) Cabinet Lights,
Lighted Air Controls, Pillowfall and/or Tranquility Fall
(Option Sold Separately)

2) **DynaPoint LED:**
(1) 5 in. (4) 2 in. LED Lights, Cabinet Lights, Lighted
Pillowfall and/or Tranquility Fall (Option Sold Separately)



Island Spas™



Santa Cruz

84 in. x 61 in. x 32 in.

213 cm x 155 cm x 81 cm

Seating Capacity 3

33 Jets | Acrylic: White Pearl

THE PERFECT FIT

The Santa Cruz is an intimate spa that provides you with soothing therapy.

The ergonomically designed lounger encompasses your body with a **revitalizing massage**.

Island Spas™



Nevis

84 in. x 78 in. x 34 in.

213 cm x 198 cm x 86 cm

Seating Capacity 6

45 Jets | Acrylic: White Pearl



Island Spas™



*“Helps with neuropathy
in my legs. I don’t know
how I survived without
our Antigua spa!”*

Owner from Pisgah Forest, California

Antigua

84 in. x 84 in. x 36 in.

213 cm x 213 cm x 91 cm

Seating Capacity 6

52 Jets | Acrylic: White Pearl

Island Spas™



Captiva

84 in. x 84 in. x 36 in.

213 cm x 213 cm x 91 cm

Seating Capacity 7

52 Jets | Acrylic: White Pearl



Island Spas™



The Double Lounger

The **Barbados** gives you plenty of reasons to relax. With multiple jet arrangements, two loungers and open barrier seating, this spa is designed for you and your guest to lounge back and **enjoy a soothing yet powerful hydrotherapy experience.**



Barbados

91 in. x 91 in. x 36 in.

231 cm x 231 cm x 91 cm

Seating Capacity 5

61 Jets | Acrylic: White Pearl

Island Spas™



The Single Lounger

The **Grand Bahama** fulfills all seating arrangement needs with its single lounger and open seating.



The tranquility waterfall with LED lighting options will turn any backyard into an oasis.

Grand Bahama

91 in. x 91 in. x 36 in.

231 cm x 231 cm x 91 cm

Seating Capacity 6

61 Jets | Acrylic: White Pearl

Island Spas™



Grand Cayman

91 in. x 91 in. x 36 in.

231 cm x 231 cm x 91 cm

Seating Capacity 7

62 Jets | Acrylic: White Pearl



Island Spas™



BIGGER IS BETTER

Release stress and send your worries away while sitting in the new Circular Bench that offers additional seating for a total of 9 seats.

Isla Margarita

108 in. x 91 in. x 36 in.

274 cm x 231 cm x 91 cm

Seating Capacity 9

71 Jets | Acrylic: White Pearl

Island Spas™

The Ultimate Island Spa

Two full-body lounge seats are **handcrafted and molded to support your body in a natural position.** The patented, helix inspired jet design provides you with a double spiral jet pulsation for the ultimate massage.



Bimini

91 in. x 132 in. x 36 in.

231 cm x 335 cm x 91 cm

Seating Capacity 10

72 Jets | Acrylic: Silver Marble



Relax, You Deserve It

Release stress and send your worries away as you relax in your own Island Spa! The St. Kitts and Santiago both come standard with a GFCI cord, letting you power the spa with any standard 20 amp wall outlet.



Santiago
84 in. x 61 in. x 32 in.
213 cm x 155 cm x 81 cm
Seating Capacity 3
33 Jets | Acrylic: White Pearl



Enjoy the convenience of these 20 amp spas WITH a circulation system



St. Kitts

84 in. x 78 in. x 34 in.

213 cm x 198 cm x 86 cm

Seating Capacity 6

33 Jets | Acrylic: White Pearl



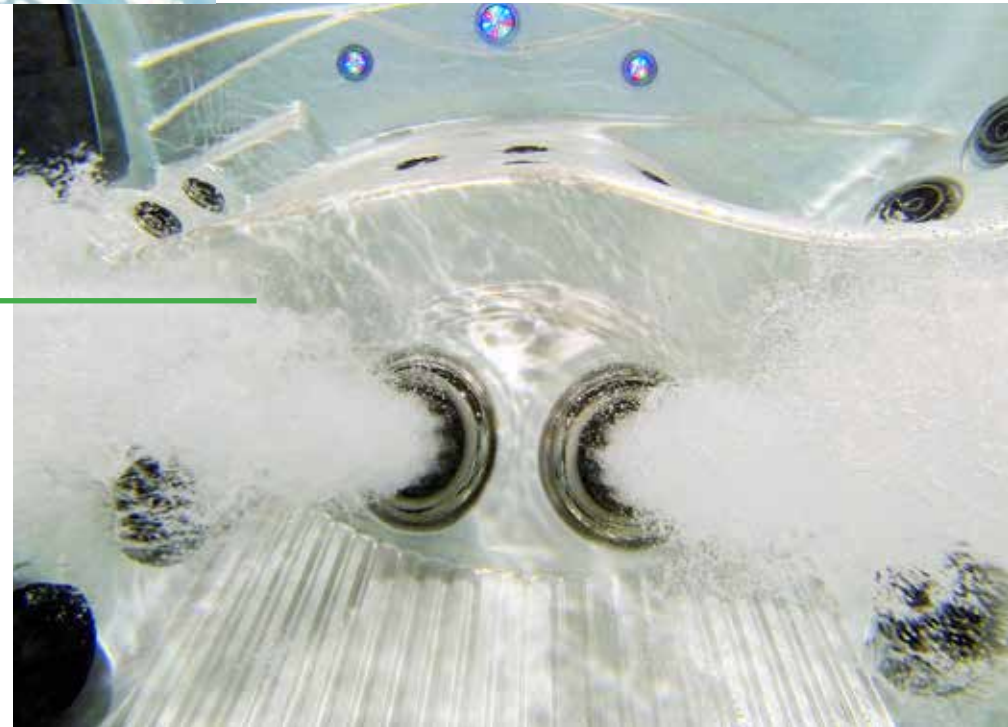
TRANQUILITY FALL

Relax as you hear the calming sounds of the **Tranquility Fall**

WATER FEATURES

DUAL FOOTBLASTERS

Experience the ultimate foot massage with the highly therapeutic **Dual Footblasters**



PILLOWFALL

A stream of water pours from the **Pillowfall** creating a soothing waterfall



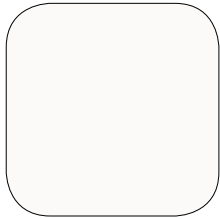
NECK JETS

The powerful **Neck Jets** relieve tightness and relax muscles

DESIGN YOUR SPA

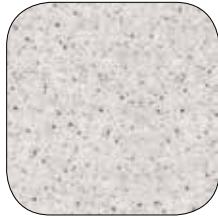
STANDARD

Solid



White

Granites



Sierra
***/+

Marbles



Silver Marble
***/+

Gemstone



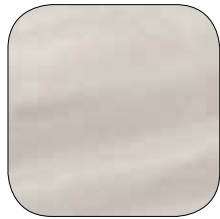
Summer
Sapphire

Luster Swirl



Oceanwave
Opal

UPGRADE



Oyster
Opal
+



Midnight
Opal
+

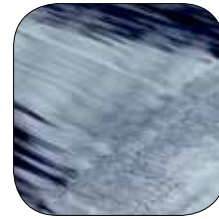
Luster Swirls
**



Tuscan Sun
+



Midnight
Canyon



Storm Clouds

Metallix
**



Winter
Solstice



Glacier
Mountain

Minerals
**



Cinnabar



Mineral White
+

Luster
**



White Pearl
+

Lucite® SPA

Artesian Spas proudly offers cast acrylic shells with an extra level of protection against mold and mildew by using Lucite®

Upgrade Colors | *Bimini available color
+Isla Margarita available color

COMBINATION OPTIONS

KINGWOOD CABINETS



Red



Grey



Taupe



Java



Black



Antique

ROCK CABINETRY



Sandstone



Javastone

Matching steps sold separately.

COVERS Upgrade your cover to ProGuard for added insulation and protection.



Red



Grey



Taupe



Java



Black

ProGuard Covers - add insulation value to the spa in regions of extreme snow and cold. ProGuard covers add approximately two inches of insulation above the standard cover. Relax, knowing the spa is safe and the heat is insulated, even in severe weather conditions.

STEPS These durable steps can be matched to your cabinet of choice.



Red



Grey



Taupe



Java



Black



Antigua Elite

84 in. x 84 in. x 36 in.

213 cm x 213 cm x 91 cm

Seating Capacity 6

845 lb 383 kg

375 gal 1419 L

Jets	Pumps
55	(1) 6.0 BHP* 1-Spd (2) 3.0 BHP* 1-Spd



Captiva Elite

84 in. x 84 in. x 36 in.

213 cm x 213 cm x 91 cm

Seating Capacity 7

845 lb 383 kg

400 gal 1514 L

Jets	Pumps
55	(1) 6.0 BHP* 1-Spd (2) 3.0 BHP* 1-Spd



Grand Bahama Elite

91 in. x 91 in. x 36 in.

231 cm x 231 cm x 91 cm

Seating Capacity 6

947 lb 430 kg

450 gal 1703 L

Jets	Pumps
65	(1) 6.0 BHP* 1-Spd (3) 3.0 BHP* 1-Spd



Grand Cayman Elite

91 in. x 91 in. x 36 in.

231 cm x 231 cm x 91 cm

Seating Capacity 7

947 lb 430 kg

475 gal 1798 L

Jets	Pumps
65	(1) 6.0 BHP* 1-Spd (3) 3.0 BHP* 1-Spd



Isla Margarita Elite

108 in. x 91 in. x 36 in.

274 cm x 231 cm x 91 cm

Seating Capacity 9

1000 lb 454 kg

550 gal 2082 L

Jets	Pumps
67	(1) 6.0 BHP* 1-Spd (3) 3.0 BHP* 1-Spd



Santa Cruz

84 in. x 61 in. x 32 in.

213 cm x 155 cm x 81 cm

Seating Capacity 3

618 lb 280 kg

225 gal 852 L

Jets	Pumps
33	(2) 3.0 BHP* 1-Spd



Nevis

84 in. x 78 in. x 34 in.

213 cm x 198 cm x 86 cm

Seating Capacity 6

769 lb 349 kg

310 gal 1173 L

Jets	Pumps
45	(2) 5.0 BHP* 1-Spd
45 DB	(2) 5.0 BHP* 1-Spd (1) 3.0 BHP* 1-Spd
44 SB	(1) 6.0 BHP* 1-Spd (1) 3.0 BHP* 1-Spd
33	(2) 3.0 BHP* 1-Spd
33 DB	(3) 3.0 BHP* 1-Spd
32 SB	(1) 5.0 BHP* 1-Spd (1) 3.0 BHP* 1-Spd



Antigua

84 in. x 84 in. x 36 in.

213 cm x 213 cm x 91 cm

Seating Capacity 6

845 lb 383 kg

375 gal 1419 L

Jets	Pumps
52	(2) 6.0 BHP* 1-Spd
51 DB	(1) 6.0 BHP* 1-Spd (1) 5.0 BHP* 1-Spd (1) 3.0 BHP* 1-Spd
45	(2) 5.0 BHP* 1-Spd
45 DB	(2) 5.0 BHP* 1-Spd (1) 3.0 BHP* 1-Spd
44 SB	(1) 6.0 BHP* 1-Spd (1) 3.0 BHP* 1-Spd
33	(2) 3.0 BHP* 1-Spd
33 DB	(3) 3.0 BHP* 1-Spd
32 SB	(1) 5.0 BHP* 1-Spd (1) 3.0 BHP* 1-Spd



Captiva

84 in. x 84 in. x 36 in.

213 cm x 213 cm x 91 cm

Seating Capacity 7

845 lb 383 kg

400 gal 1514 L

Jets	Pumps
52	(2) 6.0 BHP* 1-Spd
49 DB	(1) 6.0 BHP* 1-Spd (1) 5.0 BHP* 1-Spd (1) 3.0 BHP* 1-Spd
46	(2) 5.0 BHP* 1-Spd
45 DB	(2) 5.0 BHP* 1-Spd (1) 3.0 BHP* 1-Spd
44 SB	(1) 6.0 BHP* 1-Spd (1) 3.0 BHP* 1-Spd
33	(2) 3.0 BHP* 1-Spd
33 DB	(3) 3.0 BHP* 1-Spd
32 SB	(1) 5.0 BHP* 1-Spd (1) 3.0 BHP* 1-Spd



Barbados

91 in. x 91 in. x 36 in.

231 cm x 231 cm x 91 cm

Seating Capacity 5

908 lb 412 kg

450 gal 1703 L

Jets	Pumps
63	(2) 6.0 BHP* 1-Spd
61 DB	(2) 6.0 BHP* 1-Spd (1) 3.0 BHP* 1-Spd



St. Kitts (120V / 240V)
 84 in. x 78 in. x 34 in.
 213 cm x 198 cm x 86 cm
 Seating Capacity 6
 769 lb 349 kg
 310 gal 1173 L

Jets **Pumps**
 33 (2) 1.0 BHP* 1-Spd



Santiago (120V / 240V)
 84 in. x 61 in. x 32 in.
 213 cm x 155 cm x 81 cm
 Seating Capacity 3
 618 lb 280 kg
 225 gal 852 L

Jets **Pumps**
 33 (2) 1.0 BHP* 1-Spd



Grand Cayman
 91 in. x 91 in. x 36 in.
 231 cm x 231 cm x 91 cm
 Seating Capacity 7
 947 lb 430 kg
 475 gal 1798 L

Jets	Pumps
62 or 61 DB	(2) 6.0 BHP* 1-Spd (1) 3.0 BHP* 1-Spd
52	(2) 6.0 BHP* 1-Spd
51 DB	(1) 6.0 BHP* 1-Spd (1) 5.0 BHP* 1-Spd (1) 3.0 BHP* 1-Spd
46	(2) 5.0 BHP* 1-Spd
45 DB	(2) 5.0 BHP* 1-Spd (1) 3.0 BHP* 1-Spd
44 SB	(1) 6.0 BHP* 1-Spd (1) 3.0 BHP* 1-Spd
33	(2) 3.0 BHP* 1-Spd
33 DB	(3) 3.0 BHP* 1-Spd
32 SB	(1) 5.0 BHP* 1-Spd (1) 3.0 BHP* 1-Spd



Grand Bahama
 91 in. x 91 in. x 36 in.
 231 cm x 231 cm x 91 cm
 Seating Capacity 6
 947 lb 430 kg
 450 gal 1703 L

Jets	Pumps
62 or 61 DB	(2) 6.0 BHP* 1-Spd (1) 3.0 BHP* 1-Spd
52	(2) 6.0 BHP* 1-Spd
51 DB	(1) 6.0 BHP* 1-Spd (1) 5.0 BHP* 1-Spd (1) 3.0 BHP* 1-Spd
45	(2) 5.0 BHP* 1-Spd
45 DB	(2) 5.0 BHP* 1-Spd (1) 3.0 BHP* 1-Spd
44 SB	(1) 6.0 BHP* 1-Spd (1) 3.0 BHP* 1-Spd
33	(2) 3.0 BHP* 1-Spd
33 DB	(3) 3.0 BHP* 1-Spd
32 SB	(1) 5.0 BHP* 1-Spd (1) 3.0 BHP* 1-Spd



Isla Margarita
 108 in. x 91 in. x 36 in.
 274 cm x 231 cm x 91 cm
 Seating Capacity 9
 1000 lb 454kg
 550 gal 2082 L

Jets	Pumps
71	(2) 6.0 BHP* 1-Spd (1) 3.0 BHP* 1-Spd



Bimini
 91 in. x 132 in. x 36 in.
 231 cm x 335 cm x 91 cm
 Seating Capacity 10
 1258 lb 571 kg
 580 gal 2195 L

Jets	Pumps
72	(2) 6.0 BHP* 1-Spd (1) 5.0 BHP* 1-Spd
52	(2) 6.0 BHP* 1-Spd

SB: Single Footblaster | DB: Dual Footblaste

*BHP: Brake Horsepower

Island Elite Standard Features

- **Warranty:**
 - Lifetime Structure**
 - 7-Year Surface**
 - 5-Year Parts, Labor, Plumbing and Electrical ******
 - 2-Year Cabinet**
- WhisperPure™ Circulation System with Microfilter
- Helix SS Jet Design
- Dual Footblaster Jets
- (2) DirectFlow® Personal Controls
- Advanced Digital Control System:
Color LCD Panel, WiFi Ready (Module Required), Multi-language Interface
- Heater: 5.5 kW North America (60 Hz), 3.0 kW Export (50 Hz)
- 4 in. Maximum Tapered ASTM Cover
- Full Foam with ABS Bottom
- 12 V - 5 in. Spa Light
- Maintenance Free Kingwood Cabinets

Island Elite Optional Features

- Stereo System:
 - 1) Premium Infinity® Sound System by Harman:
Bluetooth Receiver, USB and Auxiliary Input, AM/FM, (4) 3 in. Speakers, (2) 6.5 in. Exterior Speakers, Power Subwoofer
 - 2) Bluetooth® Music Experience:
Bluetooth Receiver, AM/FM, USB, Auxiliary Input, (4) 3 in. Speakers, Subwoofer
 - 3) bba™ Audio:
Fully Integrated Bluetooth Audio Streaming, (4) 3 in. Speakers, Subwoofer Optional (2) 3 in. Patio Speakers (Stereo System 2,3)
- Water Purification:
 - 1) Diamond AOP™
 - 2) Crystal AOP™ Propure Advanced Oxidation
 - 3) Crystal ProPure™ Ozone Mixing Chamber
 - 4) Ozonator
 - 5) FROG®@ease™ with SmartChlor™++
 - 6) Nature2® Cartridge
- LED Lighting:
 - 1) DynaBrite LED:
(1) 5 in. (6) 2 in. LED Lights, (2) Cabinet Lights, Lighted Air Controls, Pillowfall and/or Tranquility Fall (Option Sold Separately)
 - 2) DynaPoint LED:
(1) 5 in. (4) 2 in. LED Lights, Cabinet Lights, Lighted Pillowfall and/or Tranquility Fall (Option Sold Separately)
 - 3) DynaStar LED:
(1) 5 in. (4) 2 in. LED Lights
 - 4) Multicolor 10 LED
- Pump/Heater Valves
- 18 in. Tranquility Fall
- Pillowfall
- PermaBase ABS Pan
- ProGuard 6 in. Maximum Tapered ASTM Cover
- Clear LED Footblaster Jets (DynaPoint or DynaBrite LED Required)
- Worldwide WiFi App Module:
Download app for smart device to control hot tub wirelessly

++ Where Allowed By Law

* Not Available on Santiago

** Not Available on Santiago or St. Kitts

*** Only Available on Santiago and St. Kitts

**** Certain components not covered under this warranty

Island Standard Features

- **Warranty:**
 - Lifetime Structure**
 - 5-Year Surface**
 - 3-Year Parts, Labor, Plumbing and Electrical ******
 - 2-Year Cabinet**
- Helix SS Jet Design
- Heater: 5.5 kW for North America (60 Hz), 3.0 kW for Export (50 Hz) **
- Advanced Digital Control System:
Color LCD Panel, WiFi Ready (Module Required), Multi-language Interface
- 4 in. Maximum Tapered ASTM Cover
- WhisperPure™ Circulation System with Microfilter
- Full Foam with ABS Bottom
- 12 V - 3.5 in. Spa Light
- Maintenance Free Kingwood Cabinet
- Heater: 1.5 kW (120 V) / 5.5 kW (240 V) for North America (60 Hz) ***
- GFCI Cord: 15 ft 120V, 20 A for North America (60 Hz) ***



Island Optional Features

- LED Lighting:
 - DynaBrite LED: (Santa Cruz (4) 2 in. LED Light) *
(1) 3.5 in., (6) 2 in. LED Light, Pillowfall/Tranquility Fall, (2) Cabinet Lights, Air Controls
 - DynaBrite LED: (St. Kitts only)
(1) 3.5 in., (6) 2 in. LED Light, Pillowfall/Tranquility Fall, (2) Cabinet Lights, Air Controls
 - DynaBrite LED: (Santiago only)
(1) 3.5 in., (4) 2 in. LED Light, Pillowfall/Tranquility Fall, (2) Cabinet Lights, Air Controls
 - DynaPoint LED:
(1) 3.5 in., (4) 2 in. LED Light, Pillowfall/Tranquility Fall, (2) Cabinet Lights
 - DynaStar LED:
(1) 3.5 in., (4) 2 in. LED Light
 - Multicolor 10 LED
- Water Purification:
 - 1) Diamond AOP™
 - 2) Crystal AOP™ ProPure Advanced Oxidation
 - 3) Crystal ProPure™ Ozone Mixing Chamber
 - 4) Ozonator
 - 5) FROG® @ease™ with SmartChlor™++
 - 6) Nature2® Cartridge
- Pump/Heater Valves
- ProGuard 6 in. Maximum Tapered ASTM Cover
- PermaBase ABS Pan (N/A on Bimini)
- Extended Warranty: 5-Year Parts, Labor, Plumbing and Electrical
- Stereo System (N/A on Santa Cruz):
 - 1) Premium Infinity® Sound System by Harman
Bluetooth Receiver, AM/FM, USB, Auxiliary Input, (4) 3 in. Speakers, (2) 6.5 in. Exterior Speakers, Power Subwoofer
 - 2) Bluetooth® Music Experience
Bluetooth Receiver, AM/FM, USB, Auxiliary Input, (4) 3 in. Speakers, Subwoofer
 - 3) bba™ Audio
Fully Integrated Bluetooth Audio Streaming, (4) 3 in. Speakers, Subwoofer Optional (2) 3 in. Patio Speakers (Stereo System 2,3)
- Captiva 52, 46, 33 Side Foot Dome (N/A with MicroSilk)
- Footblasters Option (SB/DB)
- Clear LED Footblaster
- Pillowfall
- 18 in. Tranquility Fall
- MicroSilk (Available only on Barbados 63, Grand Bahama 52, 45, 33, Antigua 45, 33, Captiva 46, 33, Nevis 45, 33 & Santa Cruz 33)
- Worldwide WiFi App Module:
Download app for smart device to control hot tub wirelessly

**The warranty printed in the booklet is for USA only.
Please contact your local dealer for relevant warranty
document in your region.**



ADVANCED DIGITAL CONTROL SYSTEM

WiFi Enabled | Color Graphics | Multiple Languages | Easy to Use | Diagnostics

Artesian Spas' next generation spa control system takes spa control to a whole new level. The sleek new design includes a large, easy-to-read back-lit LCD screen, and easy to follow menus. With a simple download from Apple's App Store and Google Play for Android devices, you now have the ability to control your spa system wirelessly!



WORLDWIDE WIFI APP MODULE

The Worldwide App Module option, allows you to access your hot tub using an app on your smart device (Android™ or iPhone®) via a direct connection anywhere in the local proximity of your tub. Gain access anywhere in your house that you can connect to your local WiFi network, or anywhere in the world you have an internet connection to your smart device via 3G, 4G, or WiFi hot spots.

With the app, you can ensure that your hot tub will be ready whenever you want to take a dip. The App provides full interface control so you can set the temperature, turn pumps on and off and even set filtration cycles - all from your smartphone or tablet.

*The app's cloud access cost is free for the 1st 12 months and then \$24 per year after. If not renewed after 12 months, the app will continue to operate in local mode only. *WiFi module purchased separately.



STEREO OPTIONS

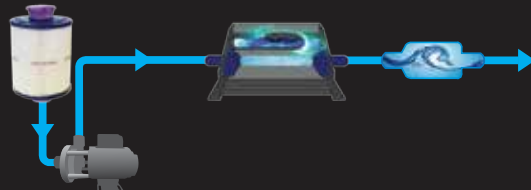
- 1) **Premium Infinity® Sound System by Harman**
Bluetooth Receiver, AM/FM, USB, Auxiliary Input, (4) 3 in. Speakers, (2) 6.5 in. Exterior Speakers, Power Subwoofer
- 2) **Bluetooth® Music Experience**
Bluetooth Receiver, AM/FM, USB, Auxiliary Input, (4) 3 in. Speakers, Subwoofer
- 3) **bba™ Audio**
Fully Integrated Bluetooth Audio Streaming, (4) 3 in. Speakers, Subwoofer
(2) 3 in. Patio Speakers (Stereo System 2,3)

WATER PURIFICATION

Our water purification systems virtually eliminates the need for chemicals. Your skin will feel soft, clean and free of harsh chemicals. Clean spa water made easy...nature's way.



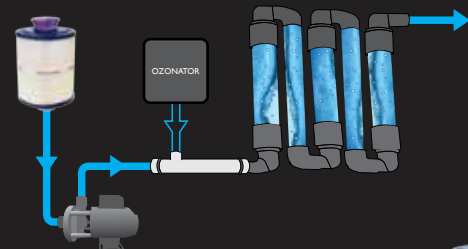
=



The Crystal AOP™ ProPure Advanced Oxidation combines the Nature2® option, Microfiltration, high efficiency Circulation Pump, UVC, Ozone and ProPure™ Mixer to create the MOST ADVANCED OXIDATION PROCESS (AOP) FOR WATER PURIFICATION.



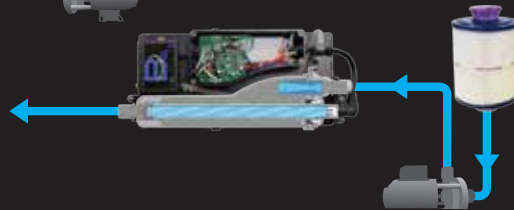
=



Water Purification combines the Ozonator, Dynamic Injector, and the ProPure Mixing Chamber. All components work together to create an innovative water purification system.



=



The Diamond AOP™ process combines the Nature2® option, Microfiltration, high efficiency Circulation Pump, and the AquaNova™ UVC & Ozone Spa Sanitizer, to create a highly advanced oxidation process (AOP) for water purification.



Artesian Spas brings you the patented in-line FROG® @ease™ system. This breakthrough system in water-care combines Fresh Mineral Water™ with SmartChlor™ Technology to provide cleaner, clearer and softer spa water that's far easier to maintain.

MINERAL
CARTRIDGE
LASTS 4 MONTHS

SMARTCHLOR™
CARTRIDGE
LASTS 3-4 WEEKS



Kills Bacteria
2 Ways

Self
Regulates
for continuous
clear water

Reinvented
Chlorine

Up to
75% Less
Chlorine

Only Shock
Once
a Month



Built in the USA for the World: Artesian Spas are sold in over 68 countries.



ARTESIAN SPAS™

WELLNESS FOR EVERY BODY

Corporate Office:

4720 N. Lamb Blvd. | Las Vegas, Nevada 89115

www.ArtesianSpas.com

Specifications are subject to change without notice. Spa images have been digitally rendered and may or may not show optional features.

